

MKC

PROFESSIONAL STEREO PRE-AMPLIFIER

MK-700BT OPERATING MANUAL

เครื่องใช้ไฟฟ้าประเภทสอง
สินค้า : แอมป์ขยาย
ชื่อรุ่นสินค้า : ชุดที่กล่อง
แรงดันไฟฟ้า : 220V ~50 HZ
ผลิต : ในประเทศจีน **มคก.1195-2536**
โรงงานผลิต : FOSHAN XINZHONGWEI ECONOMIC & TRADE CO.,LTD
ผู้นำเข้าและจำหน่าย : บริษัท มงคลชัยเทคนิค(2552)จำกัด



Thank you very much to buy our product. Please take a few minutes to read this operating instructions. It will tell how to use the product, and it explains the feature and operation of the unit and help ensure a trouble free installation. Please keep this manual for future reference.

1. Be sure to the line voltage AC 110V 60Hz.
If you aren't sure of the type of power supply to your home, consult your appliance dealer or local power company.

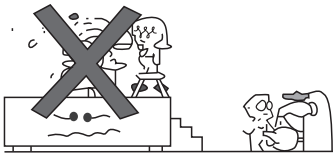
2. Protect voltage line
Avoid high pressure and stamp on, don't pull push excessively.



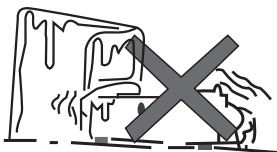
3. Avoid covering vents
Block up the vents will make the temperature in the unit become higher and will damage the unit.



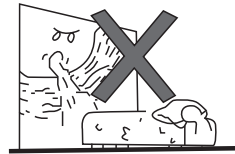
4. Avoid water dust and moisture
Don't put the unit on high moisture or a dusty plane
Flower vase and other washer container should not be put above the unit.



5. Avoid put in very low temperature place
It should not work if the temperature is very low, the well temperature is 5°C.



6. Please put this unit in the windy place
Avoid direct sunshine and near heater, don't operate in a sealed box and be sure to have enough room for the heat exchange.



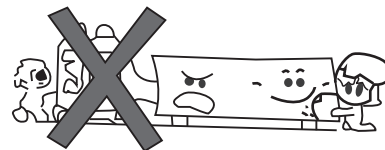
7. Avoid metals dropping in the unit
Avoid metals dropping in, like needle, hairpin, coin. Otherwise the unit will short and out of work



8. Avoid opening the cover of back
Don't open the cover, re-fix or touch the inner parts, no user-serviceable parts inside, refer servicing to qualified service personnel.



9. Avoid cleaning with volatile solution
Don't use volatile liquor. Don't clean with alcohol, painting, gasoline, etc.



1. RATED OUTPUT POWER

MAX OUTPUT POWER(4Ω/P.M.P.O) ----- 250W

2. T.H.D ----- ≤1%

3. TONE CONTROL

1) BASS f=100Hz ----- ±12dB

2) TREBLE f=10KHz ----- ±12dB

4. SEPARATION

Master channel ----- ≥45dB

5. FREQUENCY RESPONSE

Master channel=20Hz-20KHz ----- ≤2dB

6. SIGNAL TO NOISE

Master channel ----- ≥71dB

7. SPEAKER SYSTEM

Master channel ----- 4Ω

8. INPUT POWER ----- AC~230V/60Hz

9. ACCESSORIES

Operation Instructions 1pcs



* Subject to change without notice

* Above indices are for reference only

If you experience any of the following difficulties while using the unit, use this trouble shooting guide to help you remedy the problem, should any problem persist, consult your nearest dealer.

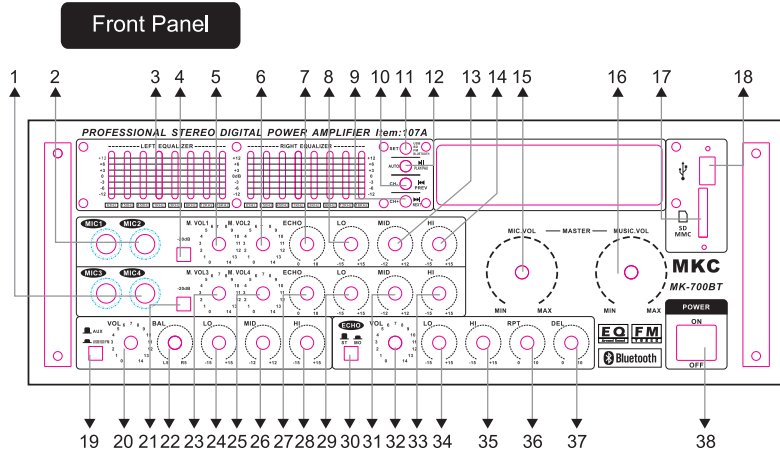
PROBLEM	POSSIBLE CAUSE
No Power	<ul style="list-style-type: none"> ● The AC power cord is disconnected ● Poor connection at the wall socket or the wall socket is inactive
No Sound	<ul style="list-style-type: none"> ● The speakers and components are disconnected ● Make sure you select the correct component on the unit ● Volume control at lowest level ● Speaker wire short or open
One master Speaker NO Sound	<ul style="list-style-type: none"> ● Bad or incorrect speaker connections ● Balance not in center ● Speaker wire short or open
Bad Sound	<ul style="list-style-type: none"> ● The place is unfit for the speakers ● Bad or incorrect speaker connections ● Treble and bass control are too low
Micphone No Sound	<ul style="list-style-type: none"> ● Micphone volume is too low ● Micphone not turned on ● Micphone wire short or open
Severe hum or noise is heard	<ul style="list-style-type: none"> ● Check that the speaker and components are connected securely ● The plugs and jacks are dirty

- ◆ Bluetooth Function
- ◆ Four Microphone Inputs with Volume Controls
- ◆ MIC Bass & Treble & Delay Controls
- ◆ MIC Repeat & Echo & Balance Controls
- ◆ Gain & Bass & Mid Bass & Mid & HI Controls
- ◆ Music Volume Controls & Master Volume Controls
- ◆ Input Selectors for PLAY & DVD & AUX

CAUTION <small>RISK OF ELECTRIC SHOCK</small> <small>DO NOT OPEN</small>	<p>WARNING: TO REDUCE THE RISK OF FIRE OR ELECTRIC SHOCK, DON'T EXPOSE THIS EQUIPMENT TO RAIN OR MOISTURE.</p>
	<p>TO REDUCE THE RISK OF FIRE OR ELECTRIC SHOCK AND ANNOYING INTERFERENCE, USE THE RECOMMENDED ACCESSORIES ONLY.</p>
	<p>THIS DEVICE IS INTENDED FOR CONTINUOUS OPERATION.</p>

CONTROLS & FUNCTIONS

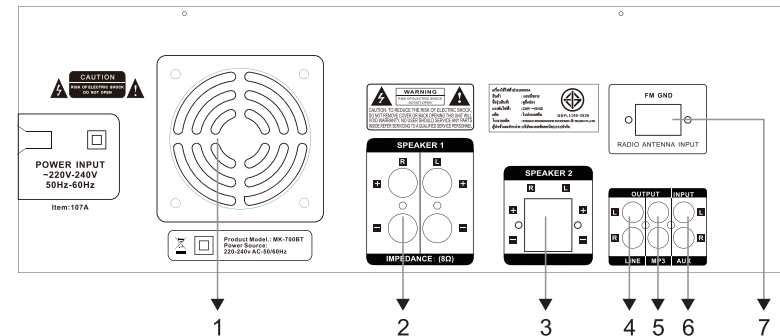
FUNCTION OF PRODUCT



- 1.MIC 3 & 2 Input: Connect the Microphone 3 & 4 here.
- 2.MIC 1 & 2 Input: Connect the Microphone 1 & 2 here.
- 3.Equalizer: Use the sliders to adjust the sound.
- 4.Gain Controls: Press this button to enhance the gain by 20dB for MIC 1 & MIC 2.
- 5.MIC 1 Volume Control: Use this knob to adjust the volume of MIC 1.
- 6.MIC 2 Volume Control: Use this knob to adjust the volume of MIC 2.
- 7.Echo Control of MIC 1 & 2: Use this knob to adjust the echo of MIC 1 & MIC 2.
- 8.Low Control of MIC 1 & 2: Use this knob to adjust the bass of MIC 1 & MIC 2.
- 9.Next: Press this button to go to next track.
- 10.Previous: Press this button to go back to previous track.
- 11.Set: Press this button to switch among all the input modes.
- 12.Play/Pause: Press this button to play signal from USB or SD card. Press again to pause.
- 13.Mid Control of MIC 1 & 2: Use this knob to adjust the Mid level frequency of MIC 1 & MIC 2.
- 14.Treble Control of MIC 1 & 2: Use this knob to adjust the treble of MIC 1 & MIC 2.
- 15.Master MIC Volume Control: Use this knob to adjust the microphones volume.
- 16.Master Music Volume Control: Use this knob to adjust the music volume.
- 17.SD Card Input: Connect the SD card here.
- 18.USB Input: Connect the USB here.
- 19.DVD & USB/SD/FM Selector: Press this button to switch the inputs between DVD and USB/SD/FM.
- 20.Music Volume Control: Use this knob to adjust the music volume.
- 21.Gain Controls: Press this button to enhance the gain by 20dB for MIC 3 & MIC 4.
- 22.Music Balance Control: Use this knob to adjust the balance of music.
- 23.MIC 3 Volume Control: Use this knob to adjust the volume of MIC 3.
- 24.Music Low Control: Use this knob to adjust the bass of music.
- 25.MIC 4 Volume Control: Use this knob to adjust the volume of MIC 2.
- 26.Music Mid Control: Use this knob to adjust the Mid level frequency of music.
- 27.Echo Control of MIC 3 & 4: Use this knob to adjust the echo of MIC 3 & MIC 4.

- 28.Music Treble Control: Use this knob to adjust the treble of music.
- 29.Low Control of MIC 1 & 2: Use this knob to adjust the bass of MIC 1 & MIC 2.
- 30.Stereo & Mono Selector: Press this button to select stereo or mono.
- 31.Mid Control of MIC 1 & 2: Use this knob to adjust the Mid level frequency of MIC 1 & MIC 2.
- 32.Echo Volume Control: Use this knob to adjust the volume of echo.
- 33.Treble Control of MIC 1 & 2: Use this knob to adjust the treble of MIC 1 & MIC 2.
- 34.Echo Bass Control: Use this knob to adjust the bass of echo.
- 35.Echo HI Control: Use this knob to adjust the treble of echo.
- 36.Echo Repeat Control: Use this knob to adjust the repeat of echo.
- 37.Echo Delay Control: Use this knob to adjust the delay of echo.
- 38.Power Switch: Use this switch to power ON/OFF the unit.

Rear Panel



1. Fan: Cooling fan.
2. Main Speaker Output 1: Connect the speakers here.
- 3-Speaker Output 2: Connect the speakers here.
4. Line Output: Connect this output to another amplifier or active speaker.
5. MP3 Output: Connect this output to another amplifier or active speaker
6. AUX Input: Connect the AUX signal here. It must be passive signal.
7. FM Antenna: Connect the FM antenna here.

Bluetooth connection:

To play Bluetooth signal, enable the Bluetooth function on a Bluetooth device like cell phone and set the amplifier to Bluetooth input mode and then search for available Bluetooth devices nearby on cell phone. The Bluetooth name of the amplifier is "MKC AMPLIFIER" Pair and connect. There is no pairing code.

Note: The amplifier is only discoverable when input is set to Bluetooth.